

Loading software for ships



Powerful and yet simple solutions provide on-board personnel with the right information quickly. A system that is easy to use on a day-to-day basis, yet powerful enough to provide all the functionality you would expect from a modern loading computer.

Planning and automation functions

Part of what makes SHIPLOAD stand out from the crowd, is the array of useful automation and planning functions that are available. SHIPLOAD will not only provide the common "what-if" analysis but will provide prompt advice on what to do, how to do it, and if you let it, will even do it for you.

SHIPLOAD's online integration with the automation system can be implemented at any level, from receiving tank levels to a fully automatic system that calculates, optimizes and executes WB or even cargo operations according to set criteria.

Advanced calculation methods – optimum results

SHIPLOAD will apply exact calculation methods on the full geometric definition of the vessel – no short-cuts, no pre-computed tables, no simplifications and no compromises. Exact computations mean that the vessel is loaded to the given limits, so no hidden dead-freight and no overloading.

This is achieved without additional complications for the user: the system performs its magic behind the scenes, simply presenting the user with the information they want to see in

a clean, uncluttered interface. The advanced user might, however, probe deeper into the matter in order to configure the calculations according to particular requirements. This additional versatility ensures SHIPLOAD matches every vessel's requirements all of the time.

Lodic AS will also gladly provide specialist modules – unique solutions for unique vessels. Just ask!

Emergency Response functionality

SHIPLOAD can simulate direct grounding and damage scenarios; a straightforward interface allows the user to create any conceivable damage case(s) thus providing emergency response decision support and the ability to train vessel personnel.

Advanced modules and options that cover Hull girder Structure/Residual Strength calculations, outflow from tanks, progressive flooding/cross-flooding and grounding/beaching forces are also available.

SHIPLOAD

Type approved by Det Norske Veritas. Approved installations on vessels with all the major class societies.



Detailed Data Sheet



Courtesy of Statoil

System

- Windows XP
- Fully compatible with the SHIPSHAPE hydrostatics and stability package

General

- Intact stability and loading condition handling
- Longitudinal strength verification against Class limits
- Water Ballast simulation to a user-specified floating position, WB exchange function
- Grain stability
- Easy change of buoyancy model for vessels with moon-pools, fish carriers, barges, etc., that will routinely open compartments to the sea
- Detailed crane loading calculations

Strength options

- Advanced Shear Force correction options
- Hull deflection calculations based on Hull Girder Structure input (hull steel structure)
- Residual strength computations based on damage definitions

Damage stability

- Damage Stability computation according to the selectable computation method, damage cases and Rules
- Different criteria can be implemented for vessels operating under several rule regimes

Emergency response/salvage

- User-specified damages
- Grounding reaction force/beaching calculations, seabed modelling
- Cargo outflow calculations
- Residual strength option (required by ISM/ Class)

Online

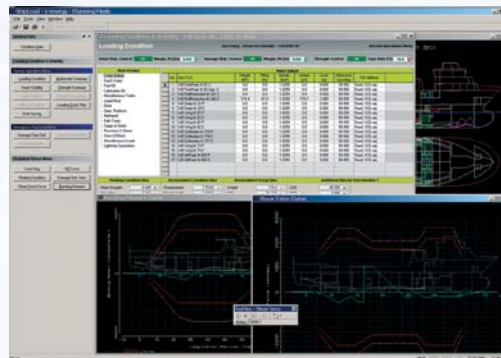
- Interfacing ShipLoad with the tank level and draught gauges
- Interfacing with cargo control systems, allowing a full integration between the Cargo Control System and the Loading Instrument

Type-specific versions

- Tanker version including Advanced Cargo Details (API calculations, ROB/OBQ, GOV, Wedge calculations, sluice valve options, etc.), unified cargo distribution
- Bulk module including (unified) cargo distribution, loading and discharge planning, full grain stability capabilities, etc.
- Graphical deck loading module (supply/ferry/RORO)
- Container loading

Hull performance - speed/fuel optimization options

- Advanced reporting modules and other functions available on request: hull performance/resistance calculations (hull/propeller fouling), trim optimization, optimum speed calculations, economic speed calculations, plus the associated reporting functions.



LODIC

LODIC AS
P.O. BOX 1273 - Pirsenteret
N-7462 Trondheim - Norway
Phone: [47] 73 83 17 34
Fax: [47] 73 83 17 35
Email: lodic@lodic.no
www.lodic.no